

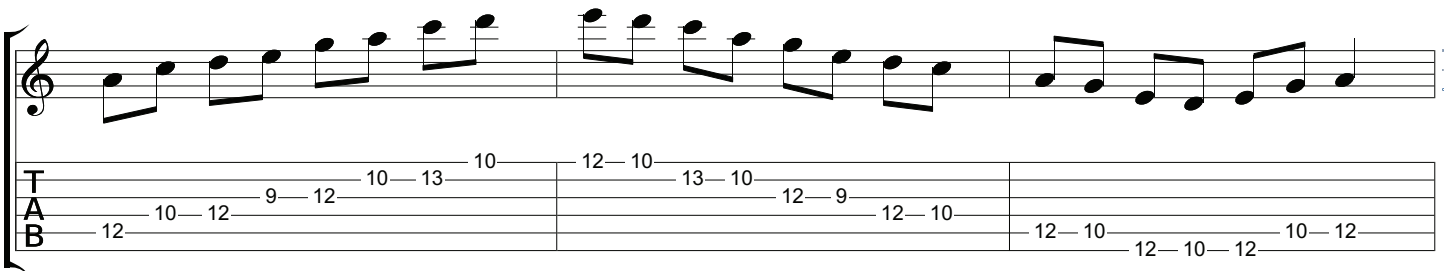
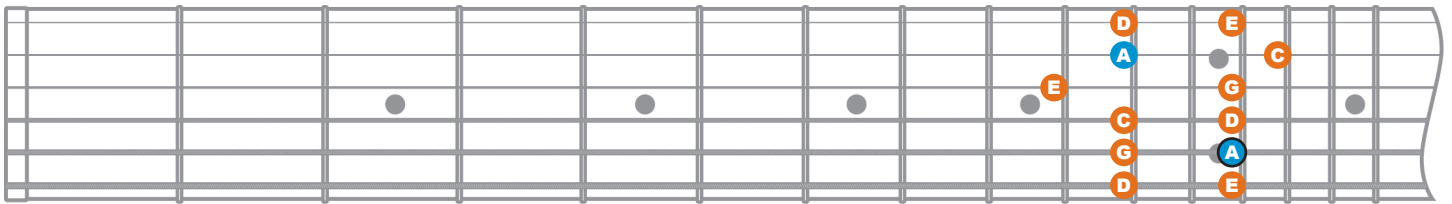
*****Blue circles indicate the location of the root. The circle with the black outline is the lowest root and the place where you start the scale.**

***** Blue circles indicate the location of the root. The circle with the black outline is the lowest root and the place where you start the scale.**

MINOR PENTATONIC PATTERNS m3-W-W-m3-W

- Can be thought of as a major scale without a 2nd or 6th note, and the 3rd and 7th notes are flatted.

Pattern 3

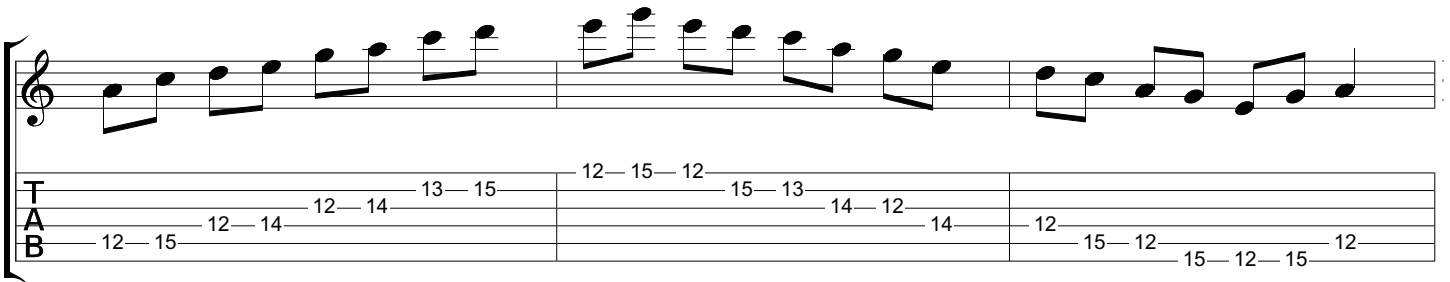
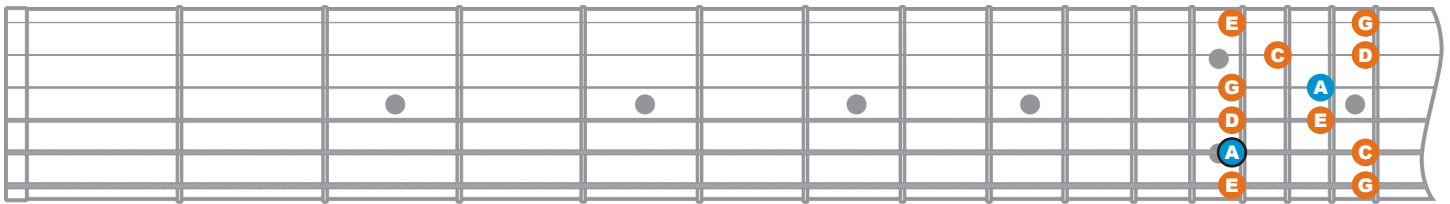


*** Blue circles indicate the location of the root. The circle with the black outline is the lowest root and the place where you start the scale.

MINOR PENTATONIC PATTERNS m3-W-W-m3-W

- Can be thought of as a major scale without a 2nd or 6th note, and the 3rd and 7th notes are flatted.

Pattern 4



***Blue circles indicate the location of the root. The circle with the black outline is the lowest root and the place where you start the scale.

*****Blue circles indicate the location of the root. The circle with the black outline is the lowest root and the place where you start the scale.**